



# Board of Supervisors The Novel Coronavirus (COVID-19)

June 16, 2020



# Santa Maria (SM) Confirmed Cases

---

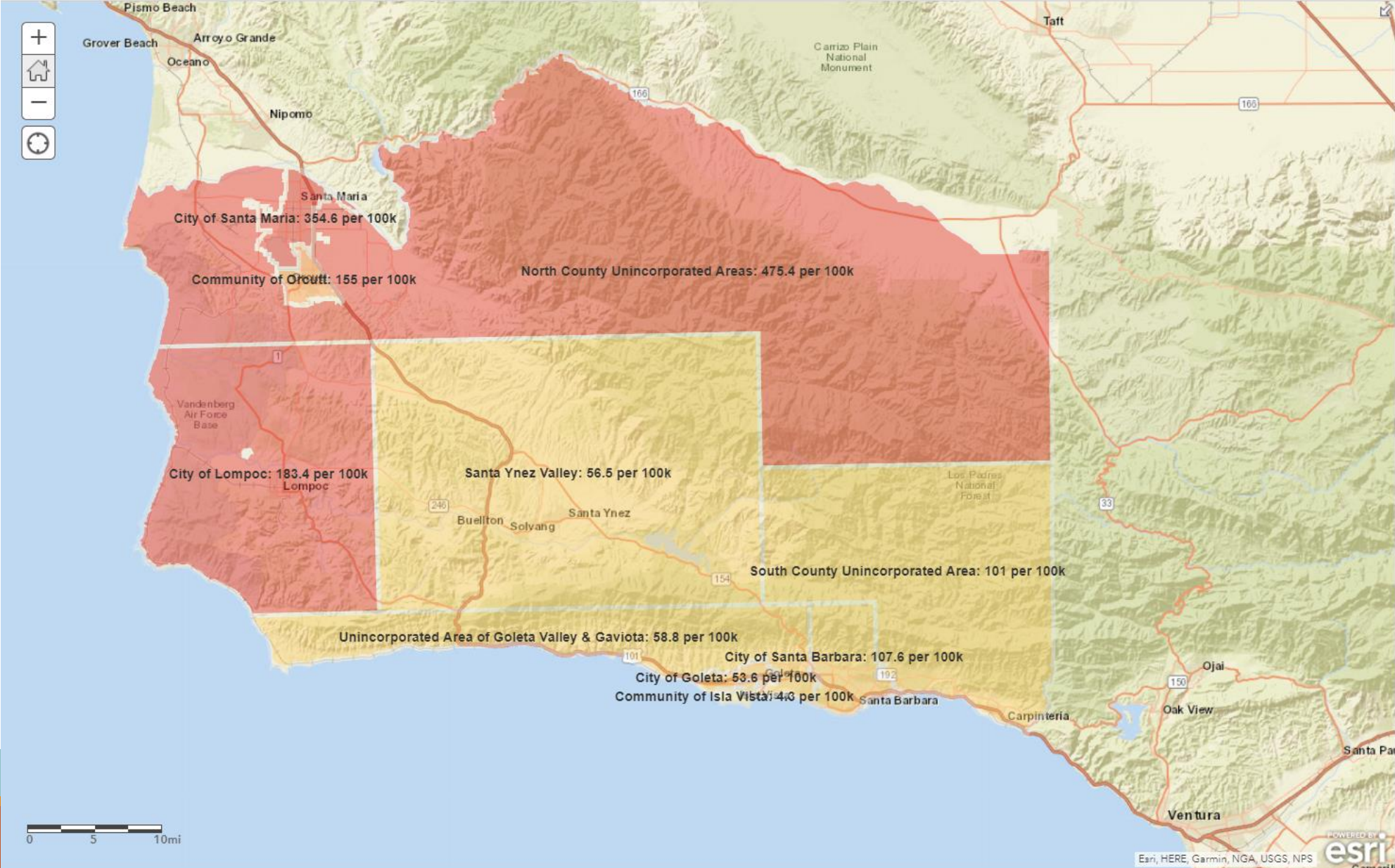
Data as of May 27, 2020

# Background

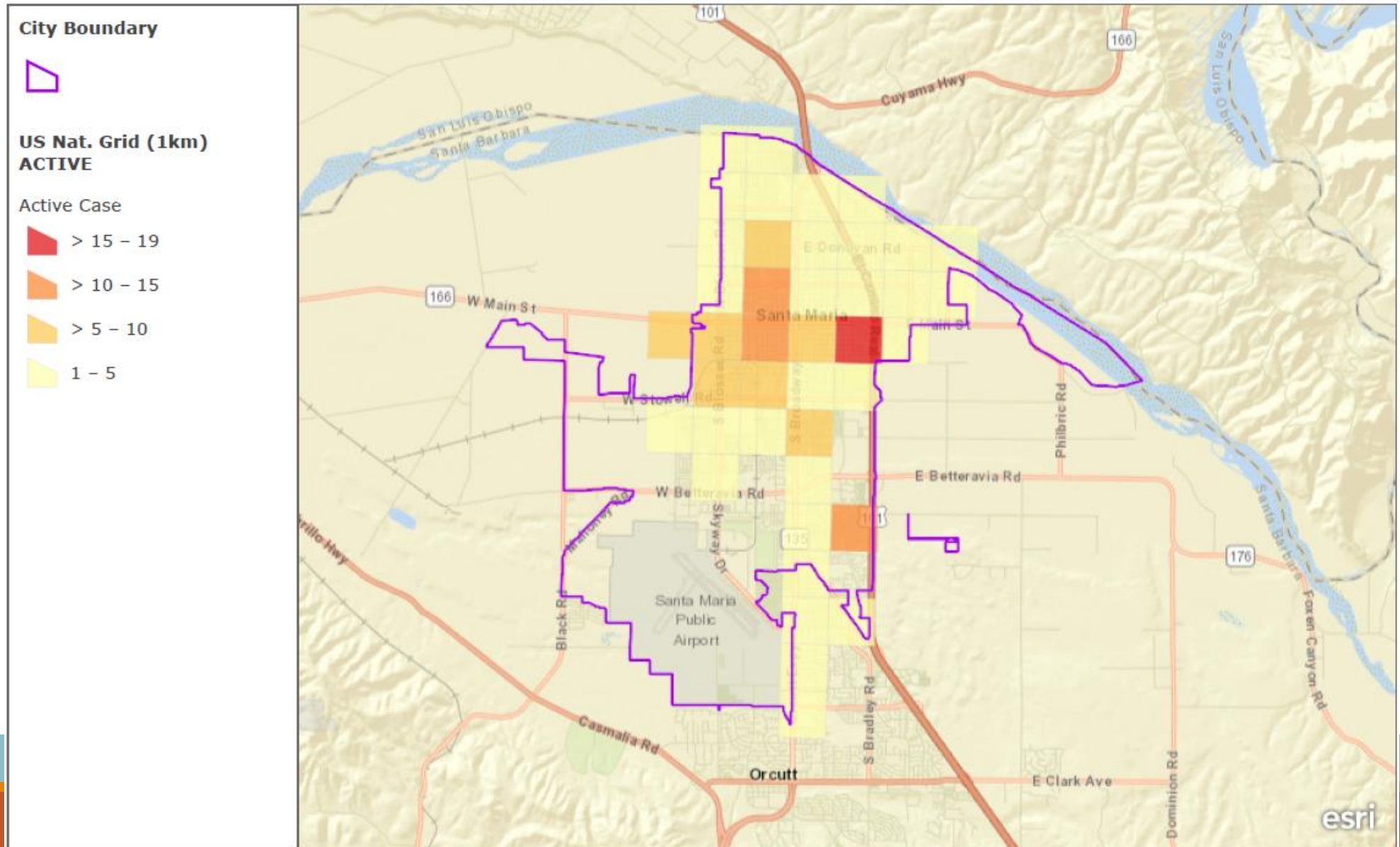
- The first cases of COVID-19 in Santa Barbara County were identified in North County
- Over the past several months, Santa Maria has seen elevated rates of COVID-19
- In order to better understand the situation in Santa Maria, the Santa Barbara County Public Health Department analyzed available data on confirmed cases



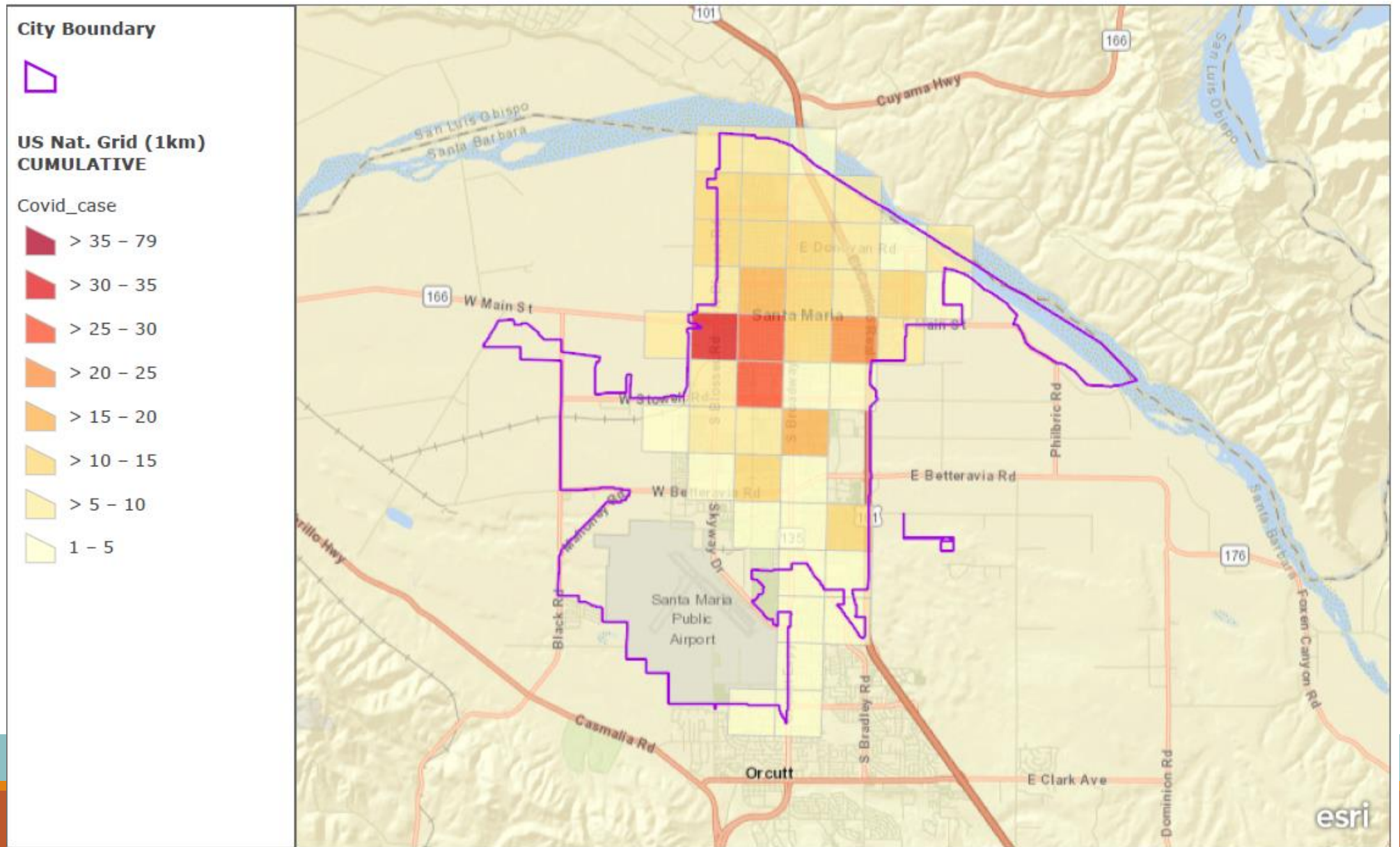
# Cumulative Case Rate



# Active cases per 1 sq km



# Cumulative Cases per 1 sq km



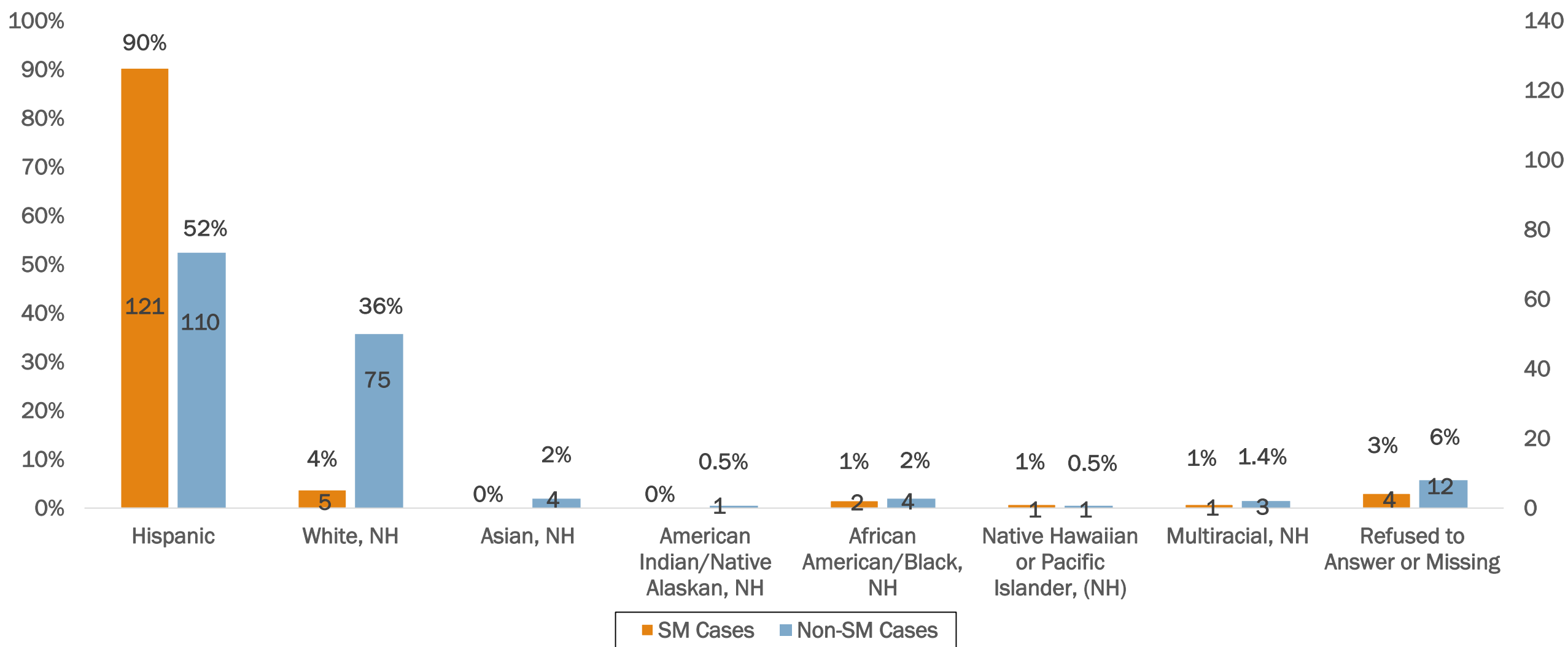
# Data Overview

- Data source is cases who agreed to be interviewed
- Total Confirmed Cases with demographic data (excluding inmates): N= 344
  - Total Confirmed Cases with GIS Region Santa Maria (SM Cases): n=134
  - Total Confirmed Cases with Other GIS Region (Non-SM Cases): n=210



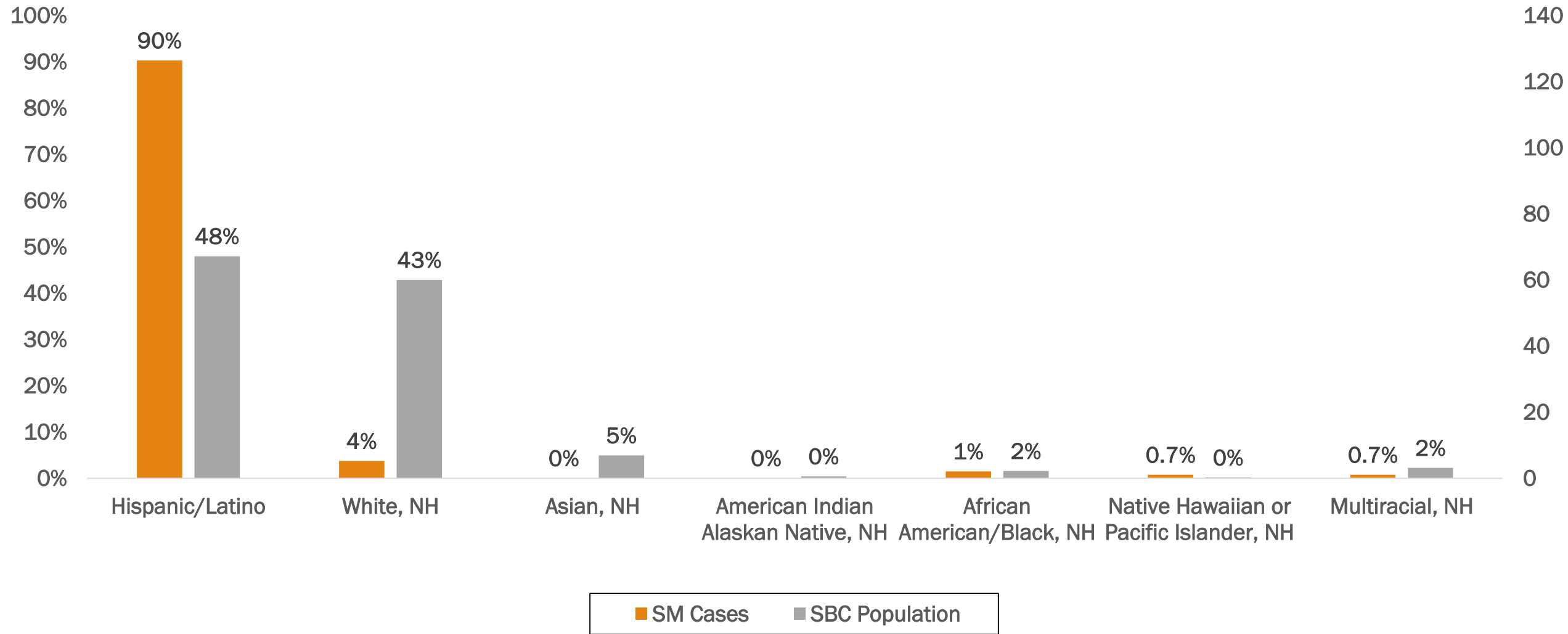
# Race/Ethnicity of Cases

(SM Cases, n=134 vs Non-SM Cases, n=210)



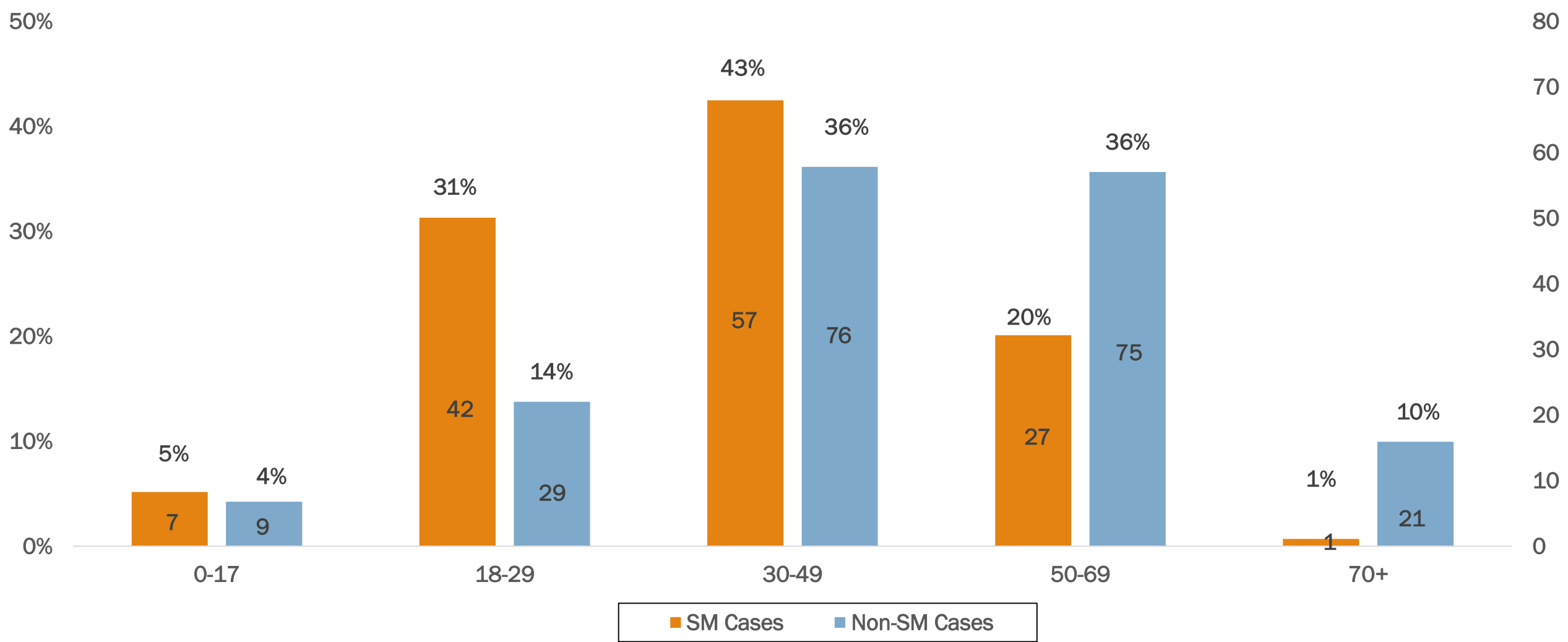


# Race/Ethnicity of SM Cases vs Population



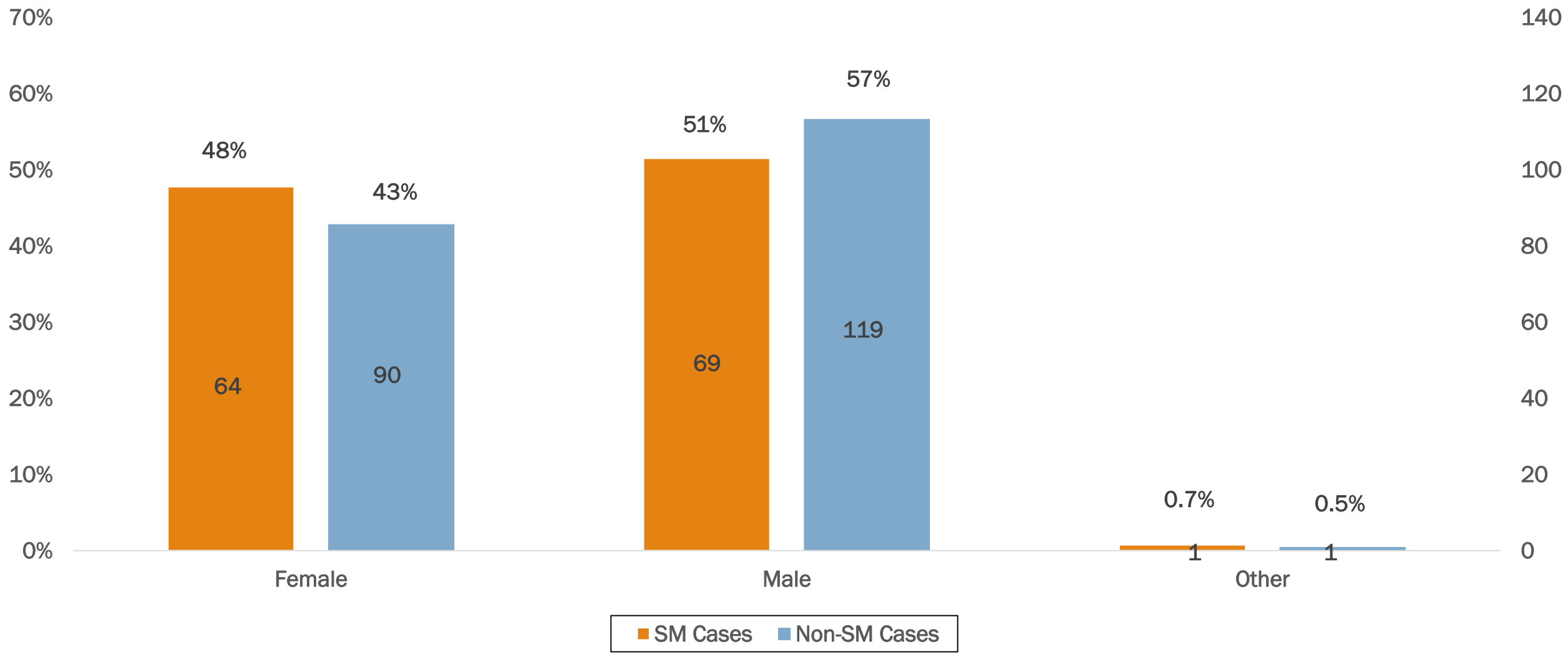
# Age Comparison

(SM Cases, n=134 vs Non-SM Cases, n=210)



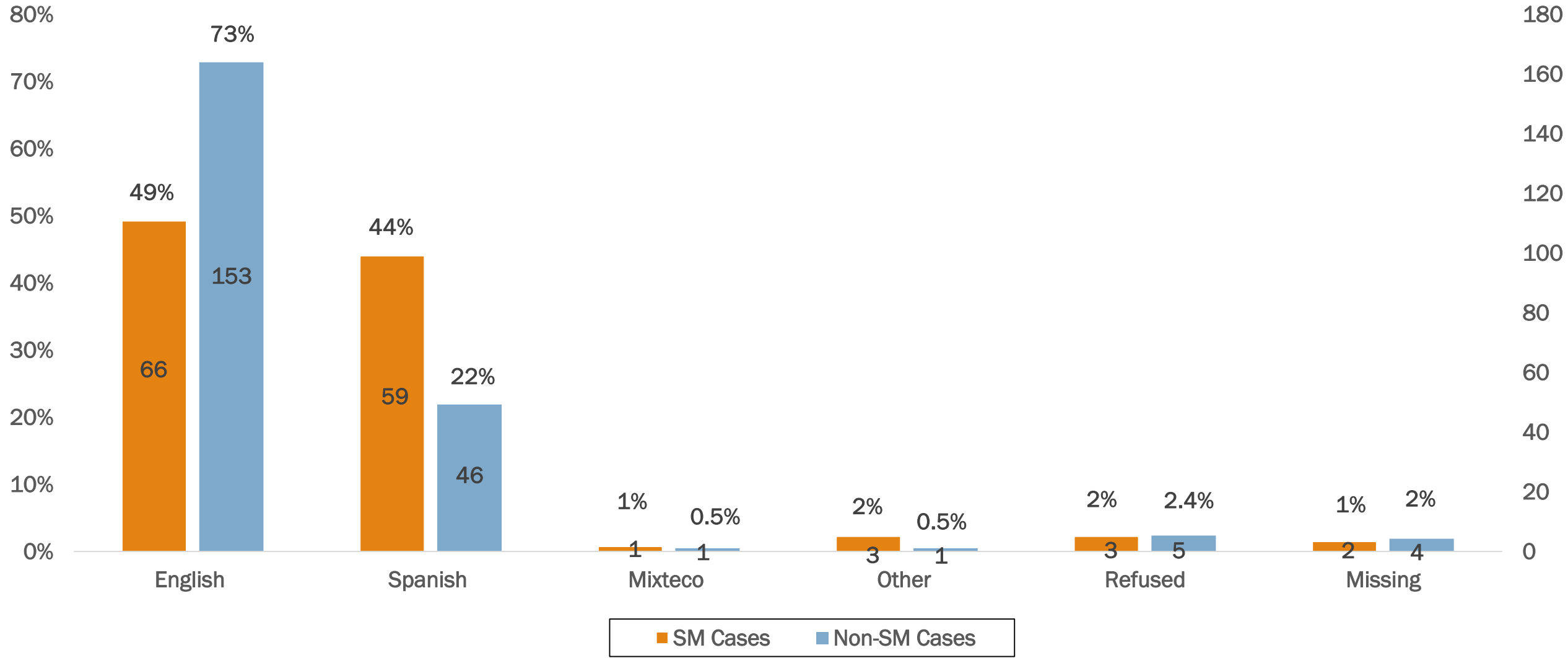
# Gender Comparison

(SM Cases, n=134 vs Non-SM Cases, n=210)



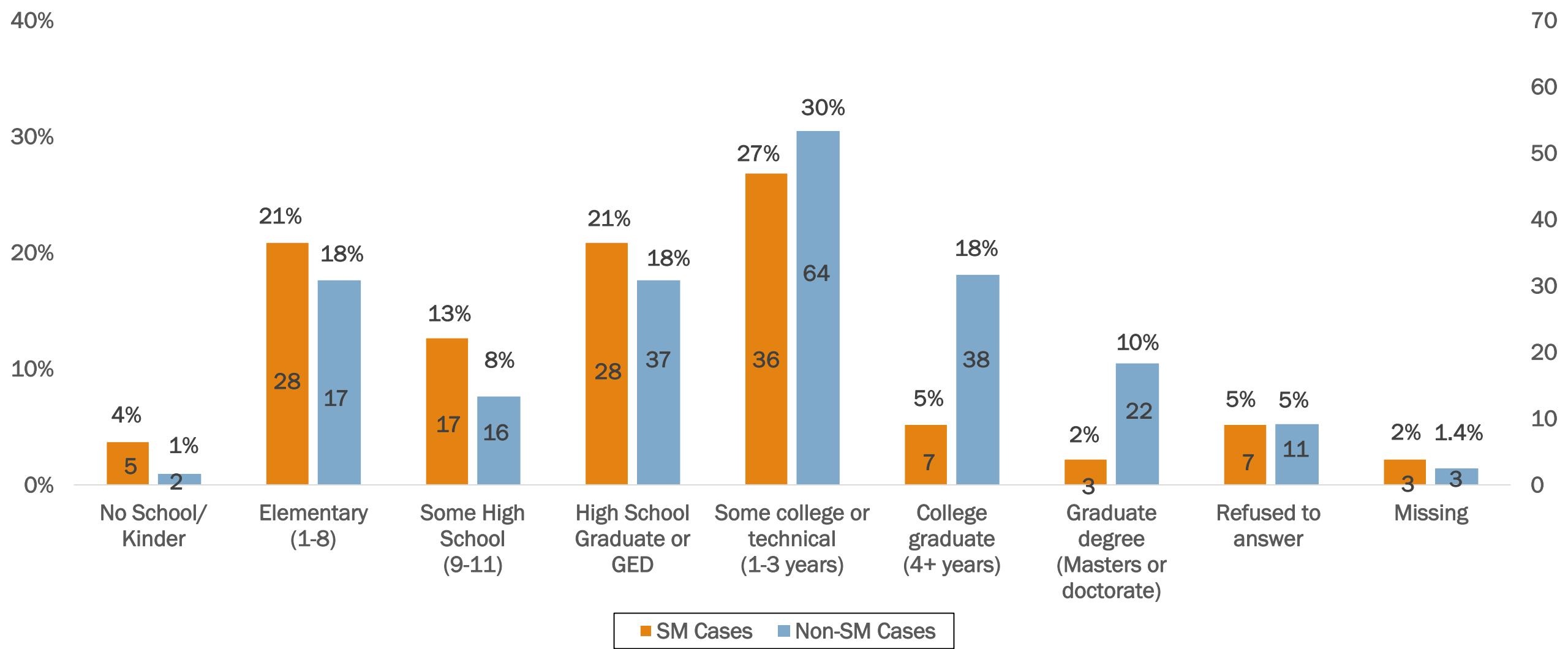
# Primary Language Comparison

(SM Cases, n=134 vs Non-SM Cases, n=210)

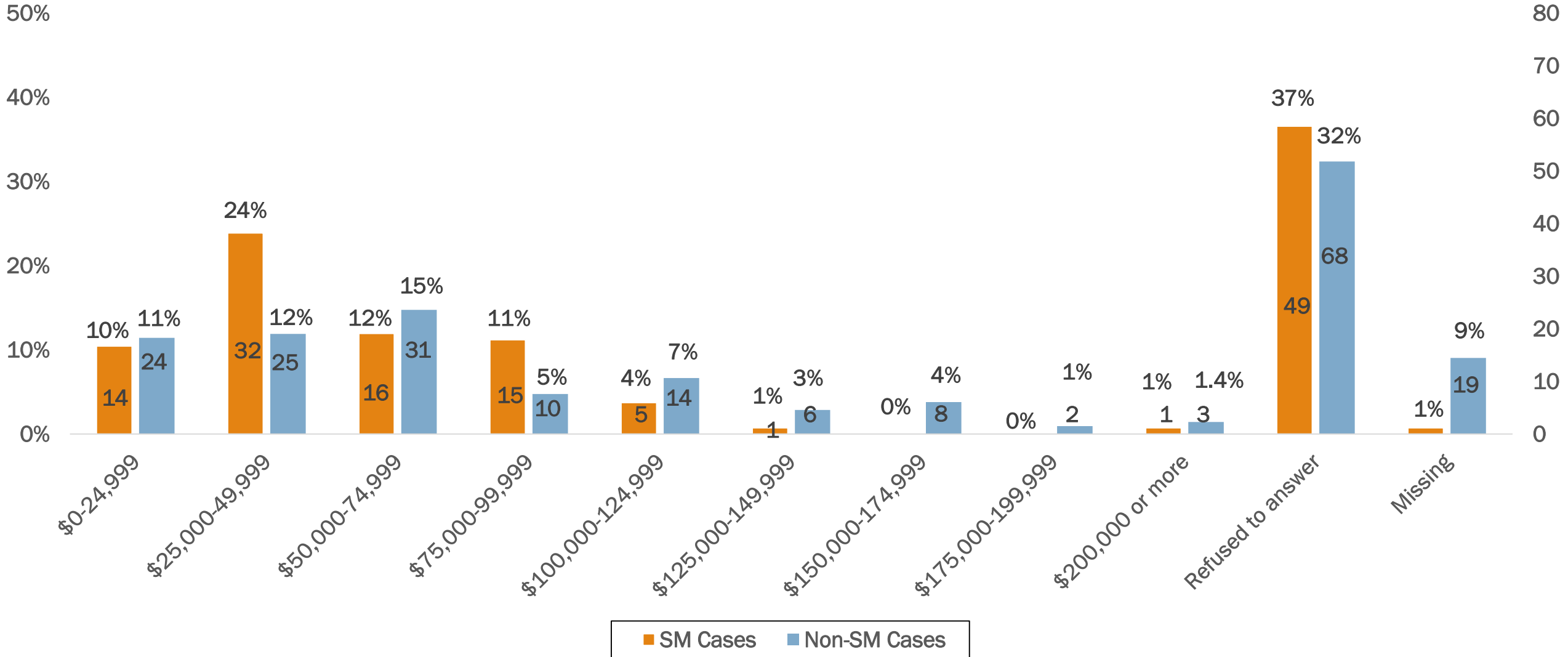


# Education Level Comparison

(SM Cases, n=134 vs Non-SM Cases, n=210)

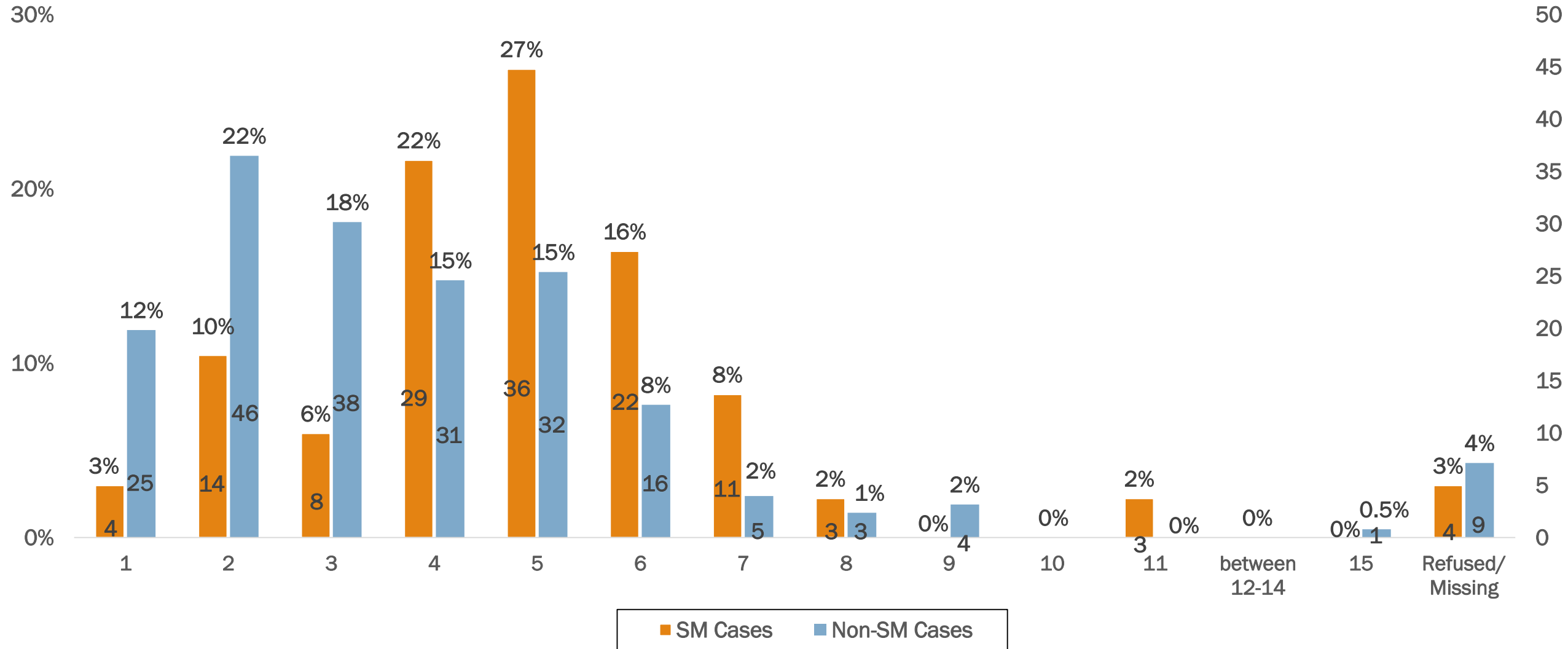


# Annual Household Income Comparison (SM Cases, n=134 vs Non-SM Cases, n=210)



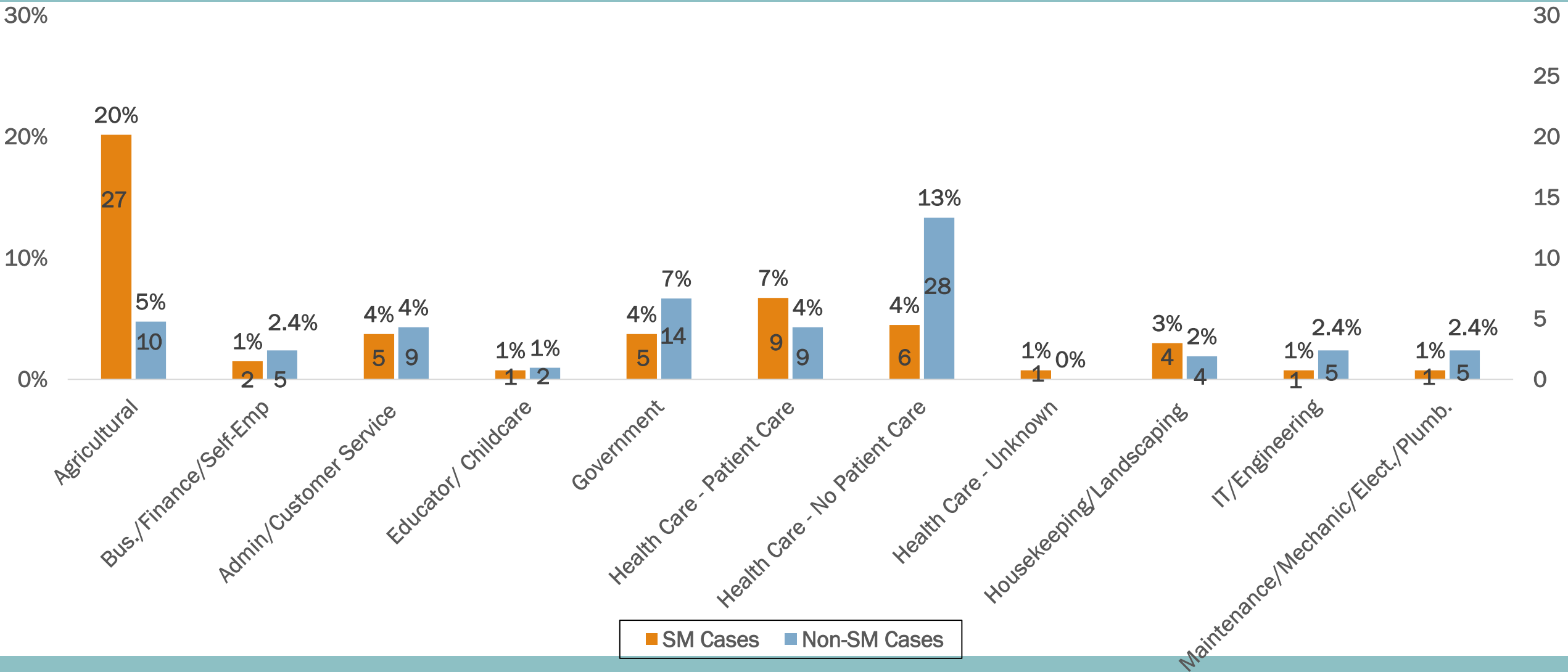
# Household Size Comparison

(SM Cases, n=134 vs Non-SM Cases, n=210)



# Occupation Comparison Part 1

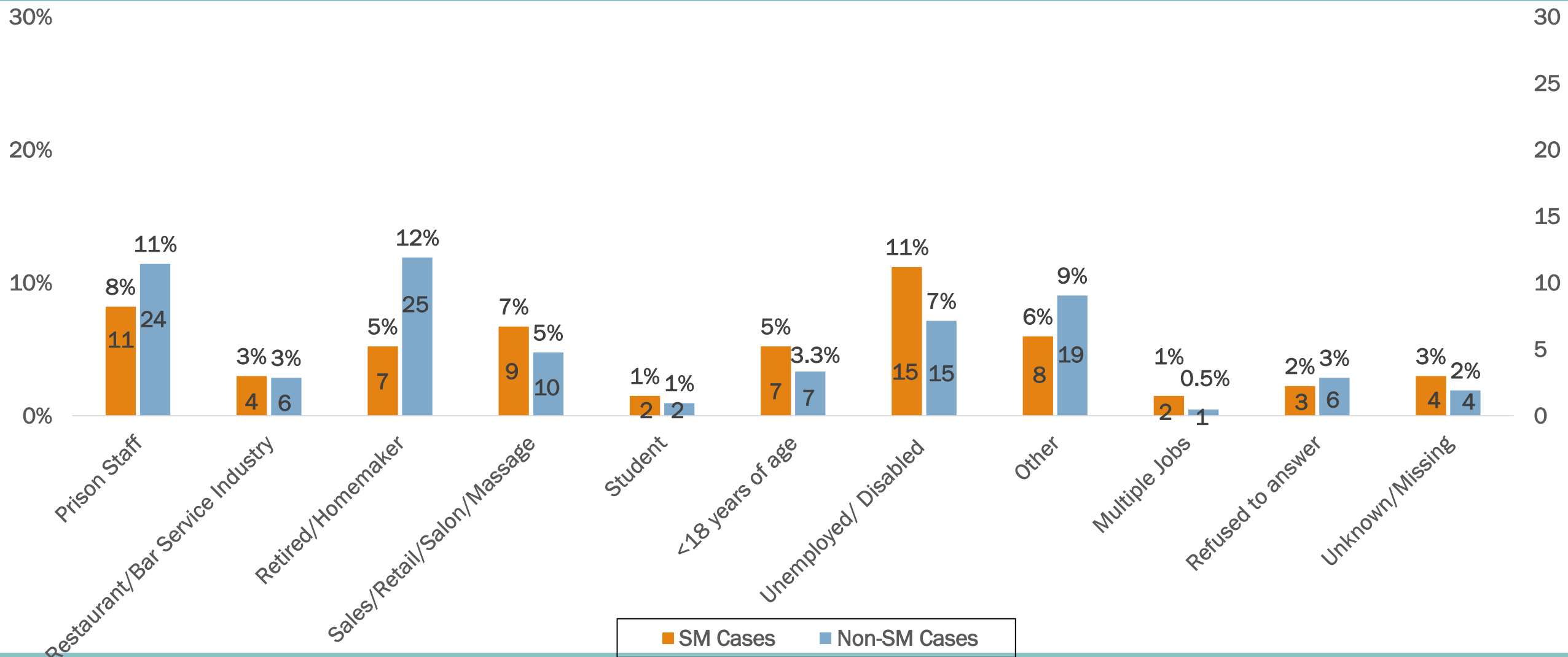
(SM Cases, n=134 vs Non-SM Cases, n=210)





# Occupation Comparison Part 2

(SM Cases, n=134 vs Non-SM Cases, n=210)



# Additional Occupation Information

- The previous slides showed occupation data from cases, who agreed to be interviewed
- Another source of data is from the Disease Control investigation staff who speak with nearly every case
- The following two slides will present information collected by investigators



# Additional Occupation Information

Community Cases as of 6/11/20	County-wide	North County	Santa Maria/ Guadalupe/ Orcutt
Total Number of Agricultural Workers	142	139	131
Total Number of Cases ages 18-69	773	582	505
% of Agricultural Workers	18.4%	23.9%	25.9%

# Key Data Findings for Santa Maria Cases

- Insurance coverage: 73% yes & 24% no
- Heard about COVID 19: 87% from TV news
- Knowledge about COVID 19: 27% somewhat; 34% moderate  
20% Extremely knowledgeable
- Knowledge of handwashing: 92% understood
- Knowledge of social distancing: 70% understood
- Able to practice social distancing at home: 72% yes & 24% no
- Able to practice Social distancing at work: 52% yes & 21% no



# Findings

- Latinos/Hispanics in Santa Maria represent a disproportionately higher number of cases compared to their representation in Santa Barbara County population and in comparison to Non-SM Cases
- When compared to Non-SM Cases, SM Cases:
  - have a higher percentage of household size between 4 and 7 individuals
  - have more cases who were uninsured and less cases with private insurance
  - are more likely to understand and practice social distancing at home and work



# Next Steps

- Partnership to increase health insurance coverage and access to health care
- Partnership to increase preventive messaging
- Partnership with employers on preventive measures
- Engage Santa Maria community in strategies to decrease spread of disease



# Thanks to the Epi Unit!

Stefany Olague

Tina Javanbakht

Joy Kane

Michelle Wehmer

**STRONGER  
TOGETHER.  
SAFELY APART.**