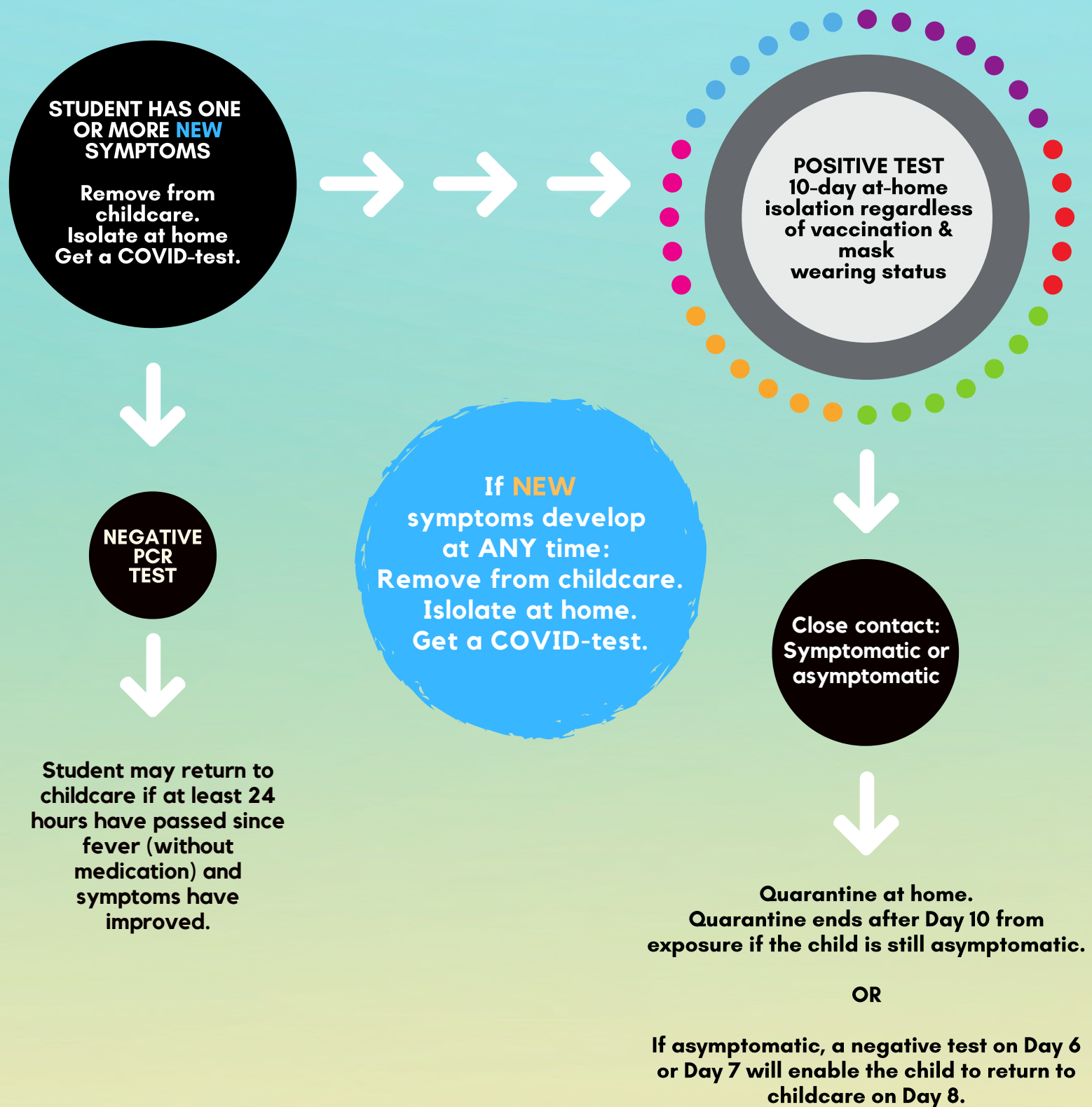


What happens when a child is in close contact with a positive case in childcare settings (not in TK-12 settings)?

*Masked or unmasked, close contact is defined as within 6 feet for 15 minutes cumulatively within a 24-hour period.

Last updated August 26, 2021



SYMPTOMS

Fever or chills, cough, shortness of breath or difficulty breathing, fatigue, muscle or body aches, headache, new loss of taste or smell, sore throat, congestion or runny nose, nausea or vomiting, and diarrhea.

These symptoms may also be associated with a known chronic condition or another medical condition as determined by a healthcare provider. The concern is when symptoms are **NEW** or there has been close contact with someone with a confirmed case of COVID-19.